



ATLANTA BOTANICAL GARDEN

ANNUAL REPORT

2019







MISSION

The mission of the Atlanta Botanical Garden is to develop and maintain plant collections for display, education, research, conservation and enjoyment.

VISION

The vision of the Atlanta Botanical Garden is to be an iconic destination and global leader, dynamically connecting people with plants in support of a thriving planet.

2019 was a year to remember...

At our Atlanta and Gainesville gardens, stunning horticultural displays showcased the splendor of all four seasons, inspiring home gardeners and plant enthusiasts alike. The “wow factor” was amplified this year with *Imaginary Worlds: Alice’s Wonderland*, an exhibition of colossal, topiary-like plant sculptures celebrating a colorful cast of storybook characters. Our team of expert horticulturists, working in partnership with International Mosaiculture of Montreal, artfully covered large steel structures with more than 110,000 plants and then meticulously manicured the intricate living designs from spring until fall—further establishing the Garden’s reputation at the forefront of the mosaiculture movement worldwide.

The Garden also grew as a leading environmental education institution, serving more than 55,000 children in 2019 through on-site and outreach activities. In addition to enriching young minds and encouraging environmental stewardship, we expanded our efforts to promote health and wellness in our community. We know that plants are the key to sustainable local food systems, and there is a great need to increase access to fresh fruits and vegetables in our city. Moving beyond the Edible Garden on our Midtown campus, we launched a new partnership with Food Well Alliance, Atlanta Community Food Bank, Truly Living Well and the City’s urban agriculture program to offer a series of hands-on workshops in community gardens across the metro area.

The Southeastern Center for Conservation gained tremendous momentum this year, propelled by the opening of our new Conservation and Training Center facility, which was one of the final major construction projects funded by the \$55 million NOURISH & FLOURISH capital and endowment campaign. The Garden’s incredibly talented scientists were hard at work in our conservation laboratories, greenhouses and nurseries, and out in the field, protecting rare and endangered

plants so that they will not be lost forever from our planet. Efforts to rescue North America’s most endangered conifer, *Torreya taxifolia*, were accelerated in the aftermath of Hurricane Michael, and the Southeastern Center for Conservation continued to make great strides in safeguarding and restoring pitcher plants, native orchids, and other imperiled species.

We continued to strengthen our innovative business model in 2019, recognizing that earned income from facility rentals, special events, and adult education helps to diversify revenue streams while also fueling the Garden’s mission. With this entrepreneurial spirit in mind, coupled with a deep commitment to promoting a greener, healthier future, we ratified a new five-year Strategic Plan to guide our organization onward to even brighter tomorrows.

A record number of 780,000 visitors passed through the Garden gates from January through December, and an unprecedented level of programming took place both locally and globally—underscoring the Garden’s value and relevance in today’s world. And we couldn’t do this vital work without your help.

We extend our sincere gratitude to the remarkable community of donors and friends who support the Garden’s success, year after year. Thanks to your generosity, the Garden continues to grow deeper roots and stronger branches, benefiting our region as a beloved destination, a center of learning, and a place of peace and enduring beauty.



Carol B. Tomé
2018-2019 Chair
Board of Trustees



Mary Pat Matheson
Anna and Hays Mershon President & CEO
Atlanta Botanical Garden



2019 EXECUTIVE COMMITTEE

Carol B. Tomé	<i>Chair</i>
John M. Dyer	<i>Vice Chair</i>
Cara Isdell Lee	<i>Secretary</i>
R. Samuel Fraundorf	<i>Treasurer</i>
Kristine M. Brown	<i>Legal Counsel</i>
Mary Pat Matheson	<i>Ex-Officio</i>
John H. Crawford IV	
Roger A. Key	
David P. Poroch	
Beth Rummel	
Mason W. Stephenson	
Mark Traylor	

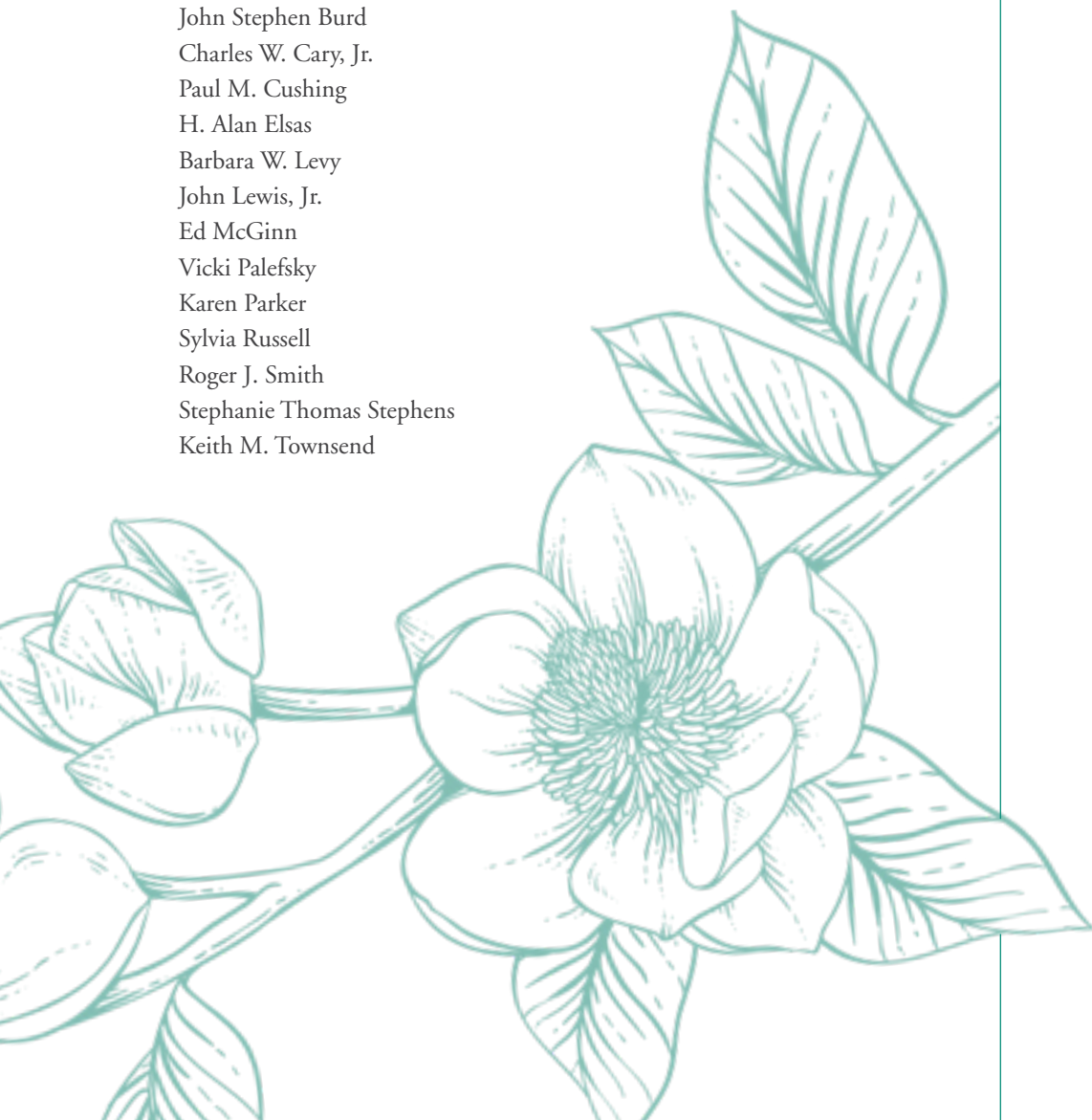
TRUSTEES

Elizabeth M. Allen
Melissa Babb
Melissa Barra
John Stephen Burd
Charles W. Cary, Jr.
Paul M. Cushing
H. Alan Elsas
Barbara W. Levy
John Lewis, Jr.
Ed McGinn
Vicki Palefsky
Karen Parker
Sylvia Russell
Roger J. Smith
Stephanie Thomas Stephens
Keith M. Townsend

LIFETIME TRUSTEES

Douglas R. Aldridge
Tricia Allen
Sylvia Attkisson
W. Moses Bond
Norris A. Broyles, Jr.
Anne Cox Chambers*
Moncure Crowder
George E. N. de Man
Mary Wayne Dixon
Flossie Dodge
J. Rex Fuqua
James Gibbs
Shearon Glover
Holcombe T. Green, Jr.
Bernard L. Greer, Jr.
Sylvia Harris
Patricia Hartrampf
Aileen P. Hatcher
Babette Henagan
Trudy Huger
John J. Huntz, Jr.
Mary Izard
David S. Martin
John Hays Mershon
Robert E. Reiser, Jr.
Olive Robinson
Deen Day Sanders
Margaret Shirley
Dean Dubose Smith
James Dean Spratt, Jr.
Harriet Warren
Tom Woodham

**Deceased, January 2020*



2019 BY THE NUMBERS

102,884

plants in the Garden's
living collections representing:

12,040
taxa

8,567
species



3.5

acres devoted to our Conservation
Safeguarding Nursery in Gainesville
to protect the Southeast's most
imperiled native plants



350+

pounds of produce
donated to Atlanta
Community Food Bank

1,000+

plants provided to
the Food Bank's
community gardens

333

full- and part-time employees

460

volunteers donated their time and talents
in a variety of ways to help the Garden grow



780,034

guests visited the Garden, **up 28%** over 2018, with **42%** of visitors identifying as people of color



42,138

member households from **2,320 different zip codes**



20,748

Title I students served through on-site and outreach programming

55,631

children who benefited from kids' tours, activities, and education programs



2,568

adults participated in Garden classes and lectures

325

teachers trained in STEM education workshops

4

International Plant Exploration Program trips to Southeast Asia to collect seeds and foster intercontinental collaboration

24

high school and college interns working to become the next generation of environmental stewards

Celebrating a *milestone*



The 30th anniversary of the Dorothy Chapman Fuqua Conservatory

Since 1989, the beautiful “gardens under glass” in the Dorothy Chapman Fuqua Conservatory have been providing visitors with unparalleled opportunities to experience an astonishingly diverse collection of plants from around the world.

The Conservatory’s opening was headline news. Lady Bird Johnson, President

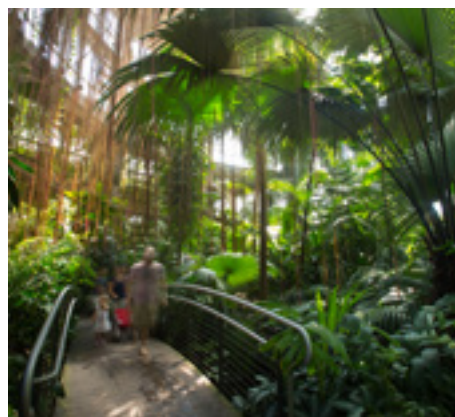
Jimmy Carter, and other dignitaries flocked to Atlanta to tour the state-of-the-art facility that had been given to the Garden by J.B. Fuqua to honor his wife Dorothy.

This new botanical destination immediately elevated the Garden’s reputation in our city and beyond. After it opened, Garden admission prices were increased from \$2 to \$4.50. Annual

visitation doubled from 100,000 to 200,000, and membership grew to more than 7,000 households. It was the beginning of three decades of extraordinary Garden growth.

The magical environment inside the Conservatory continues to enchant guests today—and we remain eternally grateful for the Fuqua family’s significant investment.

Clockwise from top left: Former Garden CEO Ann Crammond discusses a model of the new conservatory with the Fuquas at a groundbreaking ceremony. Dorothy Chapman Fuqua gives a tour of the newly-opened Fuqua Conservatory to Lady Bird Johnson. Dorothy Fuqua joins Ron Determann during construction.



Left: Dorothy Fuqua and family cut the ribbon on the Fuqua Conservatory. **Right and above:** Today, the Dorothy Chapman Fuqua Conservatory is home to hundreds of plant species from tropical and desert regions around the world.





YEAR IN REVIEW

*In 2019, the Garden
reached new heights...*

Attracting broader audiences

With a 27-foot-tall White Rabbit towering above the Skyline Garden pond—and 10 other intricately planted, larger-than-life mosaiculture installations situated throughout the Garden's 30 acres—2019's *Imaginary Worlds: Alice's Wonderland* was a true crowd pleaser, appealing to guests of all ages. Garden visitation from May through October was 30% higher than projected, helping to set a new annual attendance record.





A true stunner on the Skyline Garden Event Lawn, the Chessboard of Alice's Wonderland required 24,169 individual plants from nine species.

Other popular 2019 exhibitions included:



Japanese artist Yayoi Kusama's *Narcissus Garden*, an array of 1,400 stainless steel spheres installed in Storza Woods, on display in partnership with the High Museum of Art's *Infinity Mirrors* show



A "picture perfect" *Orchid Daze* event, featuring the work of photographer Parish Kohanim alongside the beguiling fragrances and dazzling beauty of orchids, nature's very own works of art



Museum-quality works by Philip and Matt Moulthrop, the second and third generation of an Atlanta family of acclaimed woodturners, including bowls made from tree material reclaimed from the Atlanta Botanical Garden



Seasonal sensations including the *Atlanta Blooms* bulb festival, *Scarecrows in the Garden*, and a record-breaking run of the must-see winter wonderland of *Garden Lights, Holiday Nights*

Inspiring people of all ages

Through a broad range of educational programming and outreach initiatives, and a successful membership access program, the Garden celebrated another great year of connecting people with plants.



Throughout 2019, some of our biggest successes were realized with our smallest visitors. We provided a full calendar of drop-in activities for children and families, and we offered an array of educational experiences aligned with K-12 Georgia Standards of Excellence. Over the past ten years, we have substantially increased our **Children's Education Initiative** programming for students attending Title I schools, growing from 2,000 students served in 2009 to more than 20,000 in 2019. During all on-site and outreach efforts, the Garden's Education team worked hard to make learning fun, introducing kids to key science concepts, and instilling a lifelong love of nature.



School Programs Assistant Manager Lorin Borin discusses a rare frog in the classroom.



Refugee Recipe Celebration brings a weekend of international flavor to the outdoor kitchen.

Programming in our Outdoor Kitchen continued to be a hit with adult guests this year. In addition to the **Well-Seasoned Chef** and **Fresh Plates** series, we hosted a **Refugee Recipe Celebration** weekend where chefs from Syria, Burma, Ethiopia, Nigeria, and other nations prepared and shared their favorite dishes. And for the first time, the Garden's edible gardening programs moved into outreach mode with the launch of an innovative initiative called **Plant. Eat. Repeat.** Created to support increased access to fresh produce in community gardens citywide, this program is poised to make an even greater impact in 2020.

Families are always welcome at the Garden, and 2019 represented the second full year of a special grant-funded family membership program specifically for employees of Atlanta Public Schools, the City of Atlanta, Grady Health System, and MARTA. Made possible by generous funding from the Lettie Pate Evans Foundation, the **Explore program** provides deeply discounted memberships to thousands of local teachers, nurses, security officers, transit staff, and others who work tirelessly to ensure the quality of life in our city.



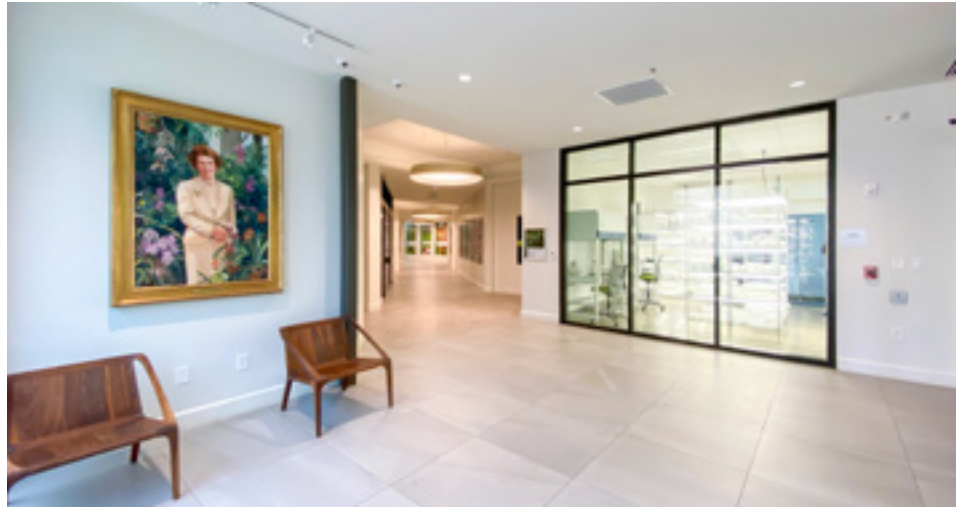
The grant-funded Explore membership program provides targeted access to local teachers, nurses, and other community-serving employees.

Enhancing gardens and facilities

For more than a decade, Garden leadership has worked to maximize every corner of our Midtown campus, cultivating show-stopping greenspaces and constructing best-in-class facilities.



In 2019, we celebrated the grand opening of a beautifully designed, two-story **Conservation and Training Center**, tucked behind the Fuqua Orchid Center. Housing the **Southeastern Center for Conservation**, it features laboratories dedicated to seed banking, conservation genetics, and micropropagation. Open work areas and ample meeting spaces allow for collaboration with a variety of research universities and government agencies—underscoring the Garden’s important role in advancing conservation science while developing the next generation of environmental stewards.



Exciting renovations also took place in our outdoor gardens, including a wide range of plantings in the **Anne Cox Chambers Southern Seasons Garden**, an expansion of the **Dwarf and Rare Conifer Garden** honoring Nancy Fraser Parker, and flower and foliage additions on the forest floor in Storza Woods. We

are grateful to all of the donors who gave restricted gifts to garden upgrades in 2019, as well as the hundreds of unrestricted contributions that supported overall garden improvements, including significant proceeds from the **Gardens for Connoisseurs Tour** and the **Garden of Eden Ball**.



Forty five new plants representing more than 23 different taxa of conifers as well as several dwarf broadleaf evergreen shrubs, Japanese maples, and flowering ground covers were planted for the renovation of the Dwarf and Rare Conifer Garden.

Restoring fragile ecosystems

From southern Appalachian mountain bogs to freshwater coastal lakes on the Florida panhandle, Garden scientists made a significant difference this year, protecting rare and endangered plants in the southeastern United States.



Much of the Garden's field work is focused on safeguarding imperiled native plant species through ex situ collections and seed banking, in addition to assisting land managers to restore degraded habitats back to their natural conditions. In 2019, we also mounted an emergency response after more than 80 percent of the tree canopy in **Florida's Torreya State Park** was destroyed in one day by Hurricane Michael. The Garden joined with Florida partners to identify and **save hundreds of the critically endangered conifers** in the park, and we are now expanding ex situ conservation and research efforts to determine how wild Torreya trees may respond to their dramatically altered landscape.



Conservation & Research team member Rashaad Tillery with a Torreya tree that survived Hurricane Michael in Florida's Torreya State Park.



The Garden is well-known for five exceptional plant collections that are nationally accredited by the American Public Gardens Association: *Magnolia*, *Acer*, *Sarracenia*, *Stanhopea* and *Gongora*. These collections were featured in *PlantIntel*, a new annual publication launched in 2019 to highlight the Garden's horticultural and conservation initiatives. Building on the Garden's track record of success, our Conservation and Research team recently launched the Global Conservation Consortium for Magnolias, in partnership with Botanical Gardens Conservation International (BGCI). Complementing these efforts, our team was admitted into the International Union for Conservation of Nature (IUCN) in 2019, and Garden staff will be joining the World Conservation Congress in 2020.

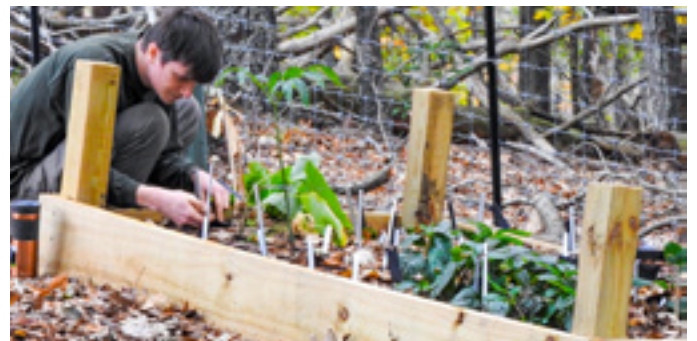
Activating the Gainesville Garden

From finishing the Ada Mae Pass Ivester Children's Garden to evaluating new plant species from Southeast Asia, Gainesville grew as a family-friendly destination while expanding behind-the-scenes research.





Construction of the eagerly anticipated **Ada Mae Pass Ivester Children’s Garden** was completed in late 2019. Situated on the highest point of the 168-acre Gainesville property, the Children’s Garden features a Lawn Labyrinth, Treehouse Play Fort, Train Garden, and Fairy Forest, interspersed with newly planted trees, shrubs, and boulder outcroppings. This captivating spot is sure to become one of North Georgia’s favorite family-friendly destinations in the years to come!



Gainesville’s behind-the-scenes facilities were also humming with activity throughout the year. Our **Conservation Safeguarding Nursery**—the largest in the Southeastern United States—provided much-needed shelter for critically endangered plants and offered opportunities to cultivate species of concern in a secure environment. In the ten years since this nursery was built, we have made extraordinary progress working with imperiled plant populations and taking steps to restore them in the wild.

Also in Gainesville, our new **International Plant Exploration Program (IPEP) field nursery** functioned as a test site for evaluating seeds and plant material collected in Southeast Asia for use in ornamental horticulture and as a repository for ex-situ conservation studies. In 2019, the IPEP team made four successful trips to Asia, met twice with conservation organizations in Vietnam, planted more than 300 trees and shrubs for evaluation, and installed new irrigation systems to enhance growing conditions on the nursery site.

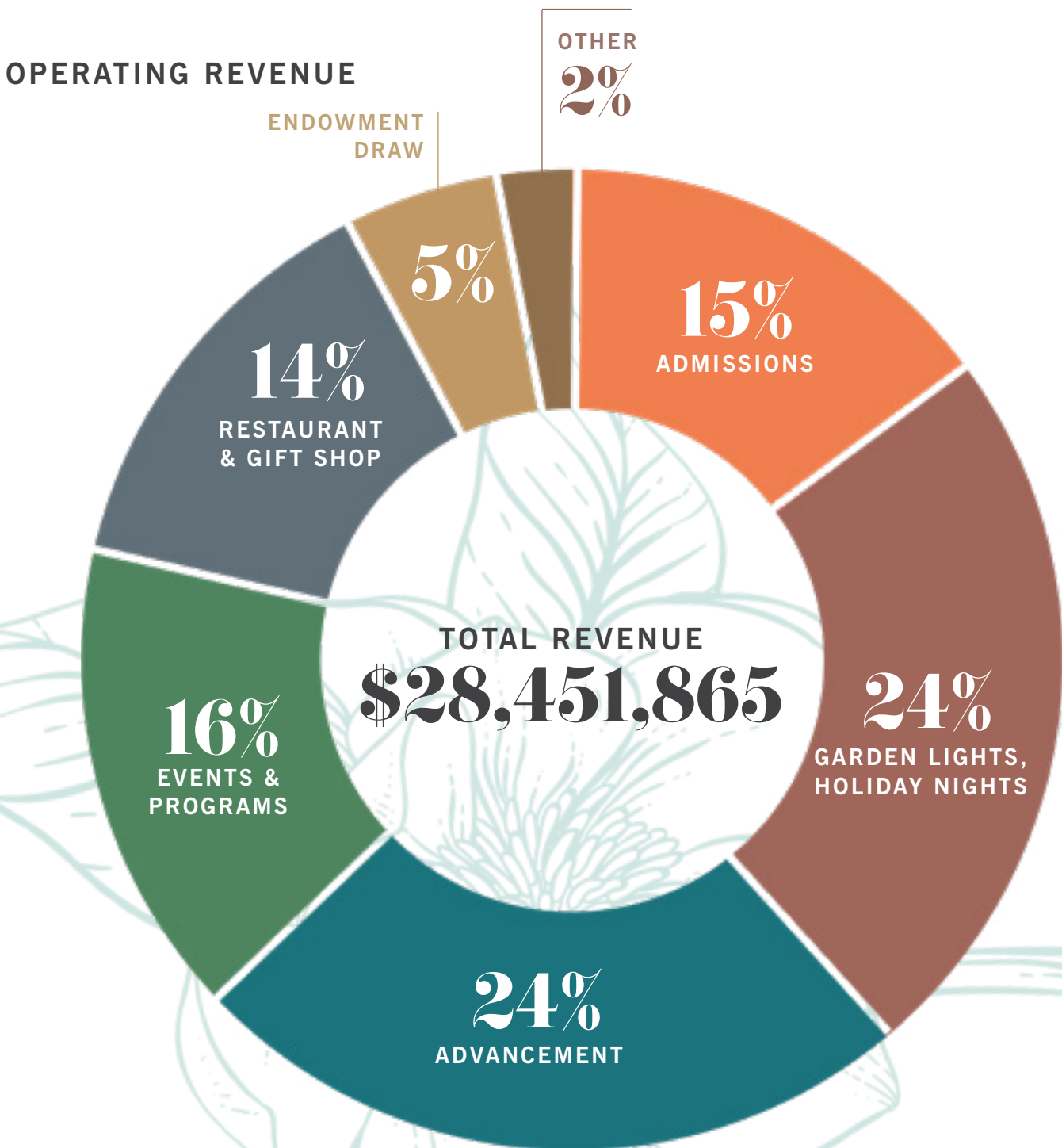


FINANCIAL SUMMARY

*for the 12-month period ending
December 31, 2019*

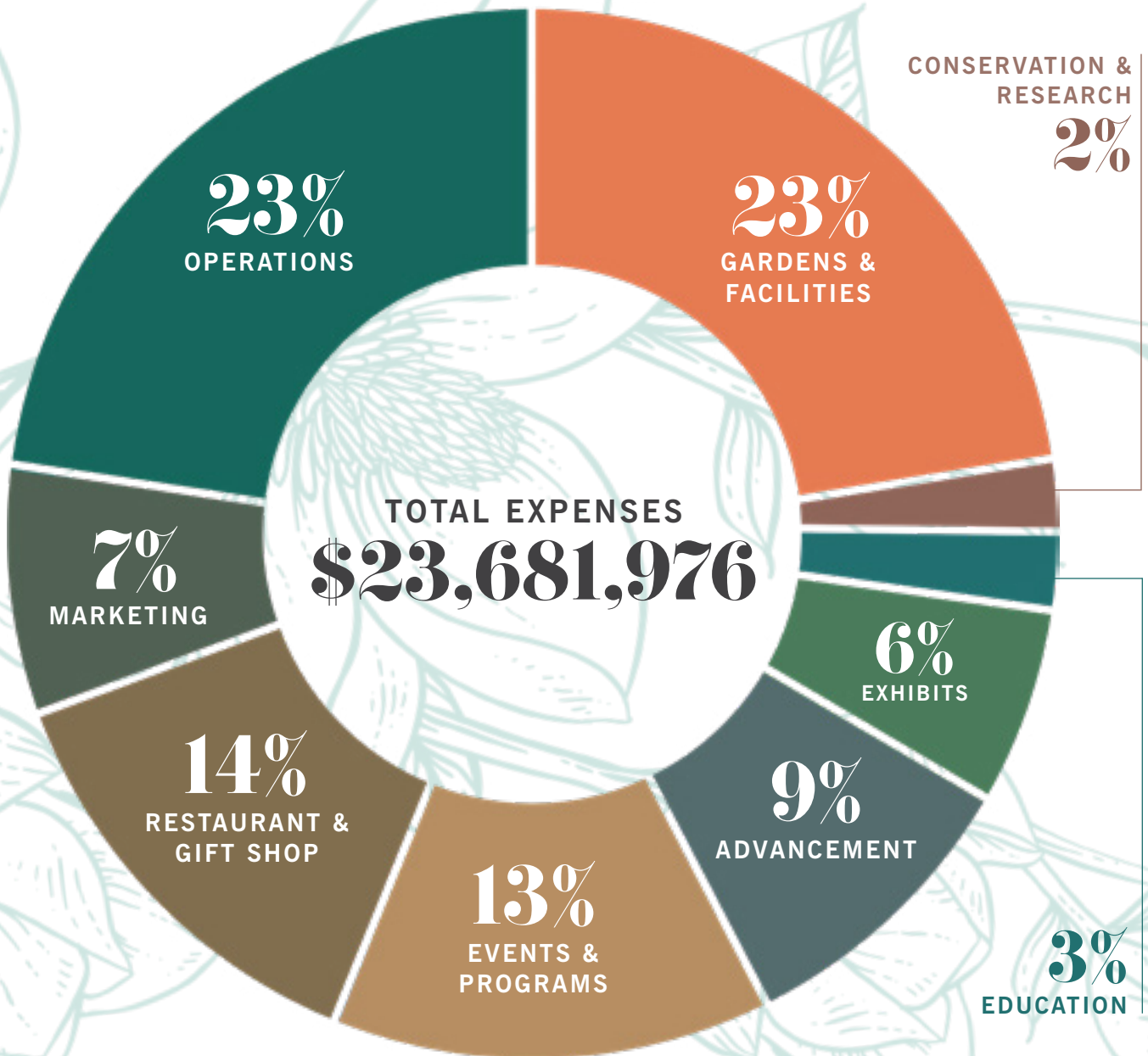


Statement of activities^{*} for the 12-month period ending Dec. 31, 2019



Operating profits of the Atlanta Botanical Garden are reinvested back into the Garden through capital projects. Capital projects can range from building renovations to replacement and repairs of existing equipment and general improvements to the Garden.

OPERATING EXPENSES



*Operating revenue and expenses do not include restricted funding for Conservation, Education, or Capital Investments.



THANK YOU
TO OUR
DONORS



INSTITUTIONS

The Atlanta Botanical Garden gratefully acknowledges the following corporations, foundations, public sector entities, and organizational donors for their contributions between January 1, 2019 and December 31, 2019.

\$1,000,000 and above

Melvin Douglas and Victoria Kay Ivester Foundation

\$750,000 - \$999,999

James M. Cox Foundation

\$250,000 - \$749,999

North Georgia Community Foundation

Lettie Pate Evans Foundation

\$50,000 - \$249,999

Cox Enterprises

Georgia Power Company

Georgia Power Foundation

The Home Depot Foundation

Isdell Family Foundation

Invesco

Katherine John Murphy Foundation

The Zeist Foundation

\$25,000 - \$49,999

Arrow Exterminators

The Coca-Cola Company

F.A. Bartlett Tree Expert Company

Forward Arts Foundation

The Fraser-Parker Foundation

Hilton

The Imlay Foundation

Macy's

\$10,000 - \$24,999

Charles Loridans Foundation

Delta Air Lines

The Fred and Sara Hoyt Charitable Trust

Fulton County Arts and Culture

The J.B. Fuqua Foundation

JBS Foundation

Kathryn J. Dinardo Fund

King & Spalding

M. Austin Davis Foundation

The Martha and Wilton Looney Foundation

Peachtree Garden Club

PNC Financial Services Group

Ray M. and Mary Elizabeth Lee Foundation

Stanley Smith Horticultural Trust

Wells Fargo Foundation

\$5,000 - \$9,999

Anonymous

Amazon

Atlanta Fine Homes Sotheby's International Realty

Christenberry, Anderson, Loomis Family Foundation

The George M. Brown Trust Fund of Atlanta

Georgia-Pacific Foundation

The Inman Foundation

John and Mary Franklin Foundation

Lanier Parking

Planters Garden Club

Realan Foundation

SKK Foundation

SunTrust Banks

\$2,500 - \$4,999

The Catherine H. & John H. Crawford, III Family Foundation

Colonial Hill Foundation

Deupree Family Foundation

The Flynn Family Foundation

The Junior League of Atlanta

Kathryn & William Bridges Family Fund

Publix Super Markets Charities

Ruth and Talmage Dobbs, Jr. Charitable Foundation

The Schroeder Foundation

The Walter G. Canipe Foundation

\$500 - \$2,499

Anonymous

The 2492 Fund

Alex and Betty Smith Donor Advised Endowment Fund

Boxwoods Gardens & Gifts

Coxe Curry & Associates

The Garden Club of Georgia

The Graves Foundation

Howard Design Studio, LLC

Joseph G. & Inez Crawford Burtchaell Foundation

Kiwanis Club of Atlanta

Land Plus Associates LTD

Loren Petersen Family Foundation

The Mary Brown Fund of Atlanta

Meadows Landscapes

Michael Jackson Landscape Company

My Secret Garden

Scapes

The Storey Foundation

Thomas H. Lanier Family Foundation

The Williams Family Foundation of Georgia

The Zaban Foundation

INDIVIDUALS

The Atlanta Botanical Garden would like to thank the following individual donors for their generous support between January 1, 2019 and December 31, 2019. Donation levels represent each donor's total giving, including annual fund gifts, Circles and other membership contributions, restricted and unrestricted grants, sponsorships, and/or other operating support.

\$100,000 and above

Mrs. Pamela Isdell

\$50,000 - \$99,999

Anonymous

\$25,000 - \$49,999

Mr. and Mrs. H. Bronson Smith

Ms. Margaretta J. Taylor

\$10,000 - \$24,999

Ms. Elkin Goddard Alston

Mr. and Mrs. Duncan Beard

Mr. Steven Behm

Mr. and Mrs. Charles W. Cary, Jr.

Dr. and Mrs. Lawrence E. Cooper

Mr. and Mrs. William W. Dixon

Mr. and Mrs. John Dyer

Mr. and Mrs. H. Alan Elsas

Virginia and Mitchell Ermentrout

Mr. and Mrs. J. Rex Fuqua

Mr. and Mrs. Charles Harrison

Mr. and Mrs. William F. Henagan

Mr. and Mrs. Michael Z. Kay

Mr. and Mrs. James C. Kennedy

Linda and Ed McGinn

Mr. and Mrs. W. Thomas Mobley, Jr.

Mr. and Mrs. Ray D. Moses

Mr. and Mrs. Craig D. Perry

Robin and Marc Pollack

Mrs. Mary Anne Quin

Mr. and Mrs. Robert E. Reiser, Jr.

Mrs. Deen Day Sanders and Mr. James R. Sanders, Jr.

Mrs. Linda Sward

Mrs. Janeen Traylor and Mr. Mark Traylor

Mr. and Mrs. Leonard Wood

\$5,000 - \$9,999

Anonymous

Mr. and Mrs. Carleton Allen

Ms. Melissa Babb and Mr. Philip H. Babb

Mr. and Mrs. Dameron Black, III

Mr. and Mrs. Glenn Bosio

Mr. and Mrs. Henry L. Bowden, Jr.

Mr. and Mrs. Sam Boyte

Mr. and Mrs. Charles M. Brewer

Mrs. Carolyn Caswell

Mr. and Mrs. Richard W. Courts, IV

Ms. Suzanne M. Dansby

Mr. and Mrs. Peter T. de Kok

Mr. and Mrs. C. Edward Dobbs

Ariana and Leroy Fass

Mr. and Mrs. Jeff Fasy

Nancy and Gary Fayard

Mr. and Mrs. Donald P. Gatley

Mr. and Mrs. Thomas K. Glenn, II

Mr. and Mrs. S. Taylor Glover

Carolyn and David Gould

Mr. and Mrs. John Hatfield

Ms. Nicolette Hennings and Mr. Michael Paulk

Ms. Kathy Hornbuckle

Angela and William Hoyt

Mr. and Mrs. John J. Huntz, Jr.

Mrs. Mary Ellen Imlay

The Estate of Gay Kahn Joel

Ms. Sandra L. Kelch

Mr. Alfred D. Kennedy and Dr. William R. Kenny

Mr. and Mrs. Muhtar Kent

Mr. and Mrs. W. David Knight

Cheri and Bill Lennie

Ms. Linda Lively and Mr. Jim Hugh

Mrs. Lynn Lowance

Mr. and Mrs. John F. McMullan

Mr. and Mrs. John Hays Mershon

Mr. and Mrs. James H. Morgens

Mr. and Mrs. George Nemhauser

Mr. and Mrs. Richard C. Parker

April and Kyle Porter

Cindy and Joseph Ronchetti

Dr. Deborah Levy and Mr. Bert Russo

Mrs. Laura S. Spearman

Mr. and Mrs. James D. Spratt, Jr.

Mr. and Mrs. Alexander Taylor

Mr. and Mrs. Joe Thomas

The Honorable Ronit Z. Walker and Mr. Matt M. Bronfman

Mrs. Harriet Warren

Kay Watson

INDIVIDUALS (cont.)

\$2,500 - \$4,999

Anonymous
Toni and Joel Adler
Ms. Robin Aiken and Mr. Bill Bolen
Mr. and Mrs. Douglas R. Aldridge
Firelli Alonso
Mr. and Mrs. Thomas J. Asher
Ms. Marcia Bansley
Ms. Kathleen M. Barksdale
Dr. Ritu Bath and Dr. Biranj Patel
Mr. Manny Beauregard and
 Mr. Don Vellek
Candace and Jeffrey Bell
Mr. and Mrs. Matthew C. Berberich
Mr. and Mrs. Paul J. Blackney
Mr. and Mrs. Frank Blake
Ms. Diana Blank
Mr. Merritt S. Bond
Mr. and Mrs. Mose Bond
Mr. and Mrs. Dan Brooks
Mr. and Mrs. Terry Broscher
Mr. and Mrs. Norris A. Broyles, Jr.
Drs. Patricia and John Burd
Mr. and Mrs. Fred Burke
Mr. and Mrs. Russell E. Butner
Ms. Janet M. Chapman
Mr. Daniel J. Chen
Mrs. Martha Clinkscales and
 Mr. David Forquer
Mrs. Christine Tryba-Cofrin and
 Mr. David Cofrin
Dr. Martyn Crook
Ms. Robin Cutshaw and
 Ms. Donna Godsey
Jessica and John Dark
Dr. Teresa Dau and
 Dr. Amanda McMillan
Mr. Dennis Dean and Mr. Drew Brown
Mr. and Mrs. Jerome Dobson
Mr. and Mrs. John Dollarhide
Mr. and Mrs. David Dorton
Mr. and Mrs. Merritt Dyke
Stefanie and Jim Ellner
Dr. and Mrs. Charles Epstein
Mr. Steven Esau and
 Mr. Michael Ferguson
Mr. Don Fisher
Jennifer and David Foster
Mr. and Mrs. Sam Fraundorf

Mr. and Mrs. John T. Glover
Dr. and Mrs. Marvin Goldstein
Mr. and Mrs. John C. Gordon
Mr. and Mrs. Thomas L. Gossage
Mrs. Louise M. Grant
Mr. and Mrs. Bernard L. Greer, Jr.
Mrs. Robert Griffith, Jr.
Mr. and Mrs. Luther T. Griffith
Dr. and Mrs. Sanjay Gupta
Paula and Mark Hennessy
Mr. and Mrs. Douglas Hertz
Mrs. Kay Hodges
Mr. and Mrs. Howell Hollis, III
Paige and Charles Honeycutt
Caroline Howell
Mr. and Mrs. William C. Humphreys, Jr.
Ms. Cynthia Jeness
Mr. Robert A. Jetmundsen
Minde and Lewis King
Ms. Lyn B. Kirkland and
 Ms. Cheryl Tryon
Ms. Dorothy Y. Kirkley
Mr. James H. Landon
Cara Isdell Lee and Zak Lee
Mr. and Mrs. Bertram Levy
The Estate of Mrs. Thomas E. Martin, Jr.
Ms. Molly Martin and Mr. Jeff Cordle
Mr. and Mrs. David S. Martin
Liza and Derrick McSwain
Mr. and Mrs. T. Randolph Merrill
Mr. James B. Miller, Jr.
Ms. Melissa Monk
Dr. and Mrs. W. Felton Norwood
Ms. Regina Olchowski and
 Mr. Edward Potter
Ms. Christy O'Neill
Mrs. Jean Parker
Swati and Rahul Patel
Nancy and John Patterson
Kathy Powell
Mr. and Mrs. James E. Prickett
Ms. Denita Pryor
Mr. and Mrs. Gordon P. Ramsey
Mr. and Mrs. William C. Rawson
Mr. and Mrs. Roby Robinson
Lynn and Jan Saperstein
Mr. Matthew Sena
Alayne and George Sertl
Dawn and Timothy Severt

Mr. and Mrs. J. Rutherford Seydel, II
Mr. and Mrs. Thomas L. Shields, Jr.
Kim and Alex Smith
Beckie and Dave Smith
Mr. and Mrs. Charles A. Smithgall, III
Mr. and Mrs. Henry N. Staats, IV
Mr. and Mrs. Mason W. Stephenson
Mr. and Mrs. Terry L. Stinson
Kay and James Stueve
Sarah Sutherland
Laura and Sam Sykes
Maria and Timothy Tassopoulos
Mr. and Mrs. Jason Taylor
Kathleen and Jack Thornton
Carol and Ramon Tomé
Ms. Paula Turner
Mrs. William G. Vance
Pam Wakefield
Nancy Allen Waterfill and Joe Waterfill
Marcia Weber
Mrs. Lynne Winship
Ms. Joni R. Winston
Ms. Lisa Yeager and Mr. Bob Ditty

\$1,000 - \$2,499

Anonymous
Mr. and Mrs. Walter Adams
Mr. and Mrs. John G. Alston
Susan and Lorenzo Amato
Susan and James Anderson
Mary Anderson
Yum and Ross Arnold
Wendy and Neal Aronson
Betty and Robert Balentine
Mr. and Mrs. James S. Balloun
Burt Banks and David Barrett
Ms. Patricia T. Barmeyer
Whitney Barnard
Mrs. Eleanor Barton
Natalie and David Batchelor
Ms. Jan Beaves
Mr. and Mrs. James F. Bell, Jr.
Mr. William Bell, IV
Ms. Kim Berry
Mrs. Louise L. Billian
Mrs. Christina Bird-Holenda and
 Mr. Eric Holenda
Dr. R. Dwain Blackston

Mr. Lua R. Blankenship, Jr. and
Mr. Dennis R. Kemp
Mr. and Mrs. Frederick H. Bliss
Mrs. Stephanie S. Blomeyer
Ms. Janet Bogle
Mr. and Mrs. Dan W. Boone, III
Robert Boone
Kris Poll and Michael Brady
Susan and Michael Brooks
Anne Brown
The Honorable Mike Brown and
Mrs. Kristine Brown
Carolyn Brown
Mr. and Mrs. R. Alex Brown
Mr. and Mrs. John Brownlee
Mr. and Mrs. W. Wheeler Bryan
Mr. and Mrs. Bickerton W. Cardwell, Jr.
John Carroll
Susan and Tony Catalano
Alison and Wright Caughman
Mrs. Sidney Gause Childress
Ms. Edith D. Cofrin
Ms. Jessica Cohan
Mr. Bruce Cohen
Mr. and Mrs. Barksdale Collins
Ms. Casey Cornell and
Mr. Ritchie McNally
Holli and Robert Cortelyou
Pam and Dallas Covington
Dr. and Mrs. George L. Cross, III
Dr. and Mrs. O. Anderson Currie, Jr.
Lois and Larry Curry
Mr. and Mrs. Paul M. Cushing
Dr. Lewis M. Davis, Jr.
Jeff Deardorff
Dr. Christopher J. Dente
Ms. Audra Dial and Mr. Matthew Ford
Mr. and Mrs. Bruce L. Dick
Ms. Charlotte Dixon
Ms. Ellen Doft and Mr. Alexander Katz
Dr. Joseph P. Dominguez
Cathy and Larry Dorfman
Judy and Joe Dreher
Mr. and Mrs. W. Douglas Ellis, Jr.
Ms. Theresa Emig
Madonna and Paul Engle
Mrs. Suzanne G. Eskin and
Mr. Larry McIntire
Ms. Gail H. Evans

Mr. and Mrs. Mark Fair
Mr. W. Daniel Faulk, Jr. and
Mrs. Susan Faulk
Katrienne and Houston Feaster
Mr. Peter B. Fellman
Kimberly and Joseph Fess
Salima and Matt Fetter
Ms. Tracy Field
Ms. Christine File
Susan M. Franco
Frances Franklin
Capt. and Mrs. John Fry
Michele and Ben Garren
Mr. H. Earle Garvin and
Mr. Sidney L. Shirley
Cindy and David Gates
Mr. L. Tom Gay
Mr. and Mrs. Lawrence L. Gellerstedt, III
Mr. and Mrs. John S. Gillfillan
Mr. and Mrs. Christopher B. Glover
Dr. William N. Glover
Mr. and Mrs. Robert C. Goddard, III
Mr. Albert G. Goodgame
Mr. and Mrs. Henry D. Gregory, Jr.
Dr. and Mrs. William Grist
Christopher M. Haase
Mrs. JoAnn Haden-Miller and
Mr. Bill G. Miller
Catherine and Richard Haining
Mr. Lewis H. Hamner, III and
Mr. Thomas Jay Brendiar
Stephanie and David Hamner
Holland and Andrew Harris
Mary Hart Wilheit and Philip Wilheit
Ms. Aileen P. Hatcher and
Mr. Michael McCoy
David G. Haynes
Bonnie and Terry Herron
Dr. and Mrs. James E. Hinkle
Ms. Dorothy L. Holliday
Mr. David Hopkins
Mr. and Mrs. Harry C. Howard
Mamie Howard and Jerald Tillery
Mrs. Cameron P. Ives and
Mr. David P. Stockert
Mr. Gary D. Jacobs
Catherine and JJ Jaxon
Theresa and Michael Johnson
Roselle and Steven Johnson

Mr. and Mrs. Tom Johnson
Katherine and Andy Kardian
Robin and Jo Keeler
Marilyn and Leslie Kelman
Mr. and Mrs. Roger Key
Kristen Keirsey and William Stanhope
Amy Kim and John Gira
Suzanne and Thad King
Abby and Charlie Kleman
Sandra and Loren Koch
Mr. Charles R. Kowal
Malinda Krantz
Liza and George Kremer
Mr. George B. Kuzo
Mr. and Mrs. E. Cody Laird, Jr.
Mr. Rob S. Lamy
Martha and Gary Lane
Mr. and Mrs. J. Hicks Lanier, II
Mr. and Mrs. E.G. Lassiter, III
Suzie and Jay Lazega
Mrs. Sheila Lee and Mr. Jonathan Davies
Ms. Deborah K. Levey
Mr. John Lewis, Jr.
Mr. and Mrs. James MacGinnitie
Andrea and John Maguire
Mrs. Cindy Mallard
Mr. Albert S. McGhee
Mr. and Mrs. Michael McLain
Amy and Daniel McMorrow
Nancy and Jack McSweeney
Carrie and Andrei Mikhalevsky
Mr. and Mrs. Prescott Miller
Mrs. Nancy Montgomery
Mr. Kevin Murphy
Mr. and Mrs. C. V. Nalley, III
Susan Nardelli
Carolyn and Rick Nelson
Mary Alice and Patrick NeSmith
Thomas E. Nightingale
Ellen A. Olson
Jody and Scott Overcarsh
Mr. and Mrs. Frank C. Owens, Jr.
Vicki and Howard Palefsky
Susan and Robert Patterson
Mary and Kevin Peak
Dr. Ruth Perou and Ms. Liza Rivera
Ms. Margaret Petersen and Ms. Jill Adams
Mr. and Mrs. S. Howard Pharr, III
Charlotte and Ray Piper

INDIVIDUALS (cont.)

\$1,000 - \$2,499 (cont.)

Mr. and Mrs. Gene I. Poland
Ms. Lynn Pollard
Morris E. Potter
Mr. Michael C. Proctor and
 Mr. Donald L. Easterling
Ms. Susan F.C. Ramey and
 Ms. Alexia M. Kartis
Elizabeth and Thomas Ramsey
Mr. Daniel B. Rather
Cynthia and Gary Reedy
Patty and Doug Reid
Jennifer and Scott Reiser
Mr. and Mrs. Charlie Rigby
Blair and James Robbins
Betsy and Lee Robinson
Susan Rolih and Muriel Rolih
Ms. Sylvia C. San Martin
Mr. and Mrs. David Schachter
Sam Schwartz and Lynn Goldowski
Albert and Marsha Scott
Deborah and Charles Shelton
Pamela and Jeffrey Simyon
Mary Skeeles
Mr. Roger J. Smith
Mr. Brian Spickard
Heather and Chris Spires
Ms. Louise Staton Gunn
Mr. and Mrs. C. Austin Stephens
Ms. Anne Sterchi
Edward Stockman
Mr. and Mrs. J. Eugene Talley
Yonathan Thio
Ms. Patty Thomas and
 Mr. Henry Waszkowski
Margie and Reed Tuckson
Mrs. Charlotte Vincent
Mr. and Mrs. Edwin A. Wahlen, Jr.
Ms. Martha Walsh and Dr. Peter Bloland
Mr. and Mrs. Allan Wang
Alice Washington and Jim Wilson
Marc Weinberg
Mrs. Anne Weltner and
 Mrs. June W. Lehman
Dr. David Westfall
Ms. Maria Williamson and
 Mr. Charles J. Nevinson
Tiffany and Steven Wisener
Michelle and Matthew Wolfersberger
Mrs. Sarah Wood

Ms. Jeannie B. Wright
Mrs. Sherry Wright
Charlie and Dancy Wynne
Dr. and Mrs. Bill Yang
Mr. Allen Yee, Esq.
Patricia and Charles Young
Mrs. Jane H. Young
Studie and Zach Young
Mrs. Judy Zaban Miller and
 Mr. Lester Miller

\$500 - \$999

Kimberly Adams and Barbara Adams
Ms. Rebecca A. Aggelakos
Dr. Amy J. Aidman and Dr. Uriel Kitron
Janelle and Kirk Anderson
Kathleen Argenbright
Mr. and Mrs. R. Lawrence Ashe, Jr.
Mrs. Jean T. Astrop
Alex and Jill Averitt
Dr. Lucy Axtell and Dr. John G. Porter
William Baas
Mr. Robert J. Bachmann
Patricia Barganier and Gary Beck
Mr. Thomas A. Barrow, Jr.
Ellenda Bell
Grace and Paul Bellamy
Jonathan Bender
Paul Benkeser
Jo Ann and Aaron Bertrand
Gretchen and Roy Blackwell
Ryan Blankenship
Margaret and Chris Bledsoe
Mr. Joseph H. Boland, Jr.
Karen and Steve Boor
Lila and Allen Bradley
Donna and Lawrence Bradner
Laura E. Brannon
Patricia and Rafael Bras
Renee and Robert Bready
Kellie and Maurice Briceno
Lynn and Robert Brindell
Ms. Janet E. Brody and Mr. Andy Martin
Dr. Susie Buchter
Mr. Thomas F. Burleigh
Jan and Gene Burleson
Lucy and Henry Bush
Kevin M. Callaghan
Dr. and Mrs. Thomas H. Callahan
Maureen T. Callahan

Mr. and Mrs. James B. Carson, Jr.
Pat and Paolo Castelli
Jane and Benjamin Chance
Mr. and Mrs. Peter Chatel
Ms. Ruth Clem
Mrs. Margaret Cohrs and Mr. Jay Allen
Sally and Eddie Cole
Mrs. Sarah Colley and Mr. Mike Mikula
Jean and Marshall Combs
Ms. Louise Cook
Linda and Dean Copeland
Ingrey and James Coumes
Mr. and Mrs. Richard R. Crosier
Lavona Currie
Ann and Jim Curry
Ms. Maria D'Alessandro and
 Mr. Ray Dukes
Mary and Carlton Dampier
Mr. Corey Dangar
Mr. and Mrs. John M. Darden, III
Melanie Davidson and Joshua Thorpe
Mr. and Mrs. F. T. Davis, Jr.
Marjorie and Trent Davis
Patricia Deheer
Jane and Steve Denton
Judge Mary Grace Diehl and
 Mr. Michael Jablonski
Mr. and Mrs. John R. Donnell, Jr.
Ms. Laurel-Ann Dooley
Coach and Mrs. Vince Dooley
Amy and Gary Dresser
Susan Dreyer and David Schnelle
Ms. Kyra Dupree
Catherine Fare Dyer and John Dyer
Shelly and Maxwell Ellerhorst
Bonnie K. Emerson
Virginia and Robert Eschenbacher
Ms. Kristi Estes and Mr. Kevin Sprague
Ms. Diana Farmer
Lauran and Robert Fechte
Jennifer and Charles Fiorenza
Nancy and James Fleming
Mr. and Mrs. Bradford Y. Fletcher
Ms. Sara Fountain
Mrs. Alice Fraser
Stacy G. Freeman
Stacy and Reid Freeman
Elaine R. Gale
Rep. Pat Gardner and Mr. Jerry Gardner
Karen and Ronald Garner

Mary and Richard Gerakitis
 Ms. Elaine Gerke and Mr. Cliff Jolliff
 Karen and Andrew Ghertner
 Catherine C. Gille
 Jo and Corbitt Gipson
 Suzanne and Edward Godfrey
 Mrs. Carol Grady
 Helena Guirguis
 Betty and Harry Haake
 Mr. and Mrs. Thomas H. Hall, III
 Kellie and Travis Hannon
 Kathy and Randy Harber
 D' Anna and Jeff Hardesty
 Alicia Harwell
 Ms. Kristen Hayes
 Clarice Hayes
 Ms. Cynthia Hays
 Ann J. Herman
 Dr. Sarah H. Hill and Mr. B. H. Hill, Jr.
 Ruth and Jim Hinsdale
 Dr. Wayne K. Hoffman and
 Mr. Tom Torrey
 John Houlihan and Melissa Segel
 Susan Hoy and Michael Tsurutis
 Mrs. Regina Hughes
 Peggy and Ware Hutcheson
 Debra and Tom Hutchinson
 Stacy and John Ingram
 Helen Outler-Jackson and Bill Jackson
 Ms. Ann Jackson and
 Ms. Victoria Jackson
 Nancy and Douglas James
 Dr. Salley Jessee
 Mr. William Jones
 Nancy and Michael Jones
 Anna Kalynych and Harry Rinker
 Sandy and Bill Kellam
 Mrs. Juliette Kendrick
 Mrs. Donna Kennedy
 Mr. and Mrs. Michael L. Keough
 Janet Kern
 Susan and Kenneth Kincaid
 Amy and Andy Kincheloe
 Karen Kirspel
 Candace Klein
 Marilynn and Donald Kohla
 Dr. Karolyn J. Kramer and
 Mr. Franklin Cohen
 Laurie Kratz and William Davis
 Christopher J. Krebs
 William J. Krochalis
 Pamela and Linton Kuchler
 Laurie and Jeffrey Kunkes
 Mr. and Mrs. E. Trice Laird
 Ms. Linda C. LaManna
 Dr. and Mrs. S. Robert Lathan
 Agnes and Pete Law
 Karol and Coleman Lawrence
 Kathy and Richard H. Lee
 Catherine and Larry Lee
 Elizabeth and John Lee
 Dr. Dorothy E. Mitchell-Leef and
 Mr. Forrest I. Leef
 Gwen and Eric Leichty
 Ellen and Steven Levy
 Jason and Ashley Lingerfelt
 Mr. Randall Loehrig and
 Dr. Richard Stephens
 Mr. Terry Longstreth and
 Mr. Jonathan Keller
 Dr. and Mrs. Joseph Looper
 Martha Jo and Larry Lucas
 Jennifer and Kevin Lyman
 Mr. Ken MacLean
 Julie E. Marciano
 Colin Martin and Peggy Livingston
 Edward Martin
 David Mast
 J. Timothy Mast
 Mrs. Barbara McArdle
 Sally and Allen McDaniel
 Donna S. McDonald
 Kristin and Angus McFadden
 Catherine McLagan
 Brendon McLeod
 Carole McWilliams
 Mr. Theodore J. Meinhardt
 Dawn and John Melin
 Martha and Daniel Meyer
 Linda Milfred and Steven Dubner
 Eileen and Chris Millard
 Mrs. Juju Miller
 Mrs. Dorothy H. Miller
 Kelly Monical and Dustin Goossens
 Sarah and William Montgomery
 Dr. Kathryn M. Moore and
 Ms. Lois Finch
 Linda Moore and Lonnie Johnson
 Elaine and Claud Morgan
 Mrs. Vicki S. Morris and Ms. Jessica Morris
 Patryce and Susan Musselwhite
 Jessica and Ryan Newth
 Dr. Nancy Newton
 Lee Nunnally
 Mrs. Cheryl Orlando and
 Ms. Savannah Orlando
 Franklin S. Orr and Benita Cotton
 Mr. Jerry Pair
 Erin E. Patrick
 Ms. Joyce Patterson and
 Mr. Thomas J. McTier
 Mr. and Mrs. E. Fay Pearce, Jr.
 Scarlet and Derek Pendarvis
 Catherine Peters
 Mr. and Mrs. David T. Peterson
 Lori Pittman and Mark Schisler
 Mrs. Catherine T. Porter
 Christina and James Powers
 Casey and Edward Purcell
 Sharon Remaly and Ann Mertens
 Mr. Edward Ressler
 Clare and Norman Richie
 Ms. Maria Richmond
 Michael J. Robertson
 Dr. Eleanore Robinson
 Mary and Joseph Roman
 Ms. Terrie Rooks and Mr. Read Morton
 Beth and Jeff Rummel
 Mr. and Mrs. Michael J. Rust
 Mr. and Mrs. Robert Safay
 Mrs. Janet Schoff and
 Mr. Richard Nailling
 Yihui and Steve Schramm
 Catherine and Randy Schultz
 Suzanne and Richard Schultze
 Jean and Steve Scott
 Dr. and Mrs. George P. Sessions
 Cliff Settle
 Joyce Sharpe
 Lisa Sheehy
 Ms. Rebecca Sherrill and
 Ms. LeeAnn Jones
 Ms. Beverlee Silva and
 Dr. Ameila A. Langston
 Sandra R. Smith
 Houston Snead
 Carol and Ronald Sorrow
 Paul V. Spiegl
 William J. Spurlock, II

INDIVIDUALS (cont.)

\$500 - \$999 (cont.)

Mr. and Mrs. John C. Staton, Jr.
Ms. Sharon Steele and
Ms. Emily Gwynn
Elizabeth Stephens
Yee and John Stevens
Esther and Jim Stokes
Aina Stratton
Mrs. Kay Summers
Suzanne Szabo and Diana DeLaTour
Helen Tandoh
Heather and Marc Tardif
Mr. Clarence Taylor
Bill Tepper
Dr. William Thoms, Jr.
Mary Thurlow
Ms. Laura Tomlin and Dr. Donald Nesbitt
Christine Tompkins
Mr. and Mrs. Michael W. Trapp
Pamela and Dick Treadwell
Julia and Kam Tse
Patricia and Eddie Turner
Mrs. DeLana Valentine
Mr. and Mrs. Wayne R. Vason
Marianne and Paul Velker
Jill Von Grey
Ms. Rose Marie Wade
Anita and Fred Wallace
Jonne and Paul Walter
Jolanda and Guido Walther
Alisa Waschak and David Fields
Elizabeth and Scott Webber
Tammy Weeks and Amanda Collins
Phyllis and Stephen Weiss
David Welden and Jeanette Faucett
Lezlie and Michael Welty
Sherrie and Jordan Wetstone
Mr. and Mrs. William A. Whitaker
Paula and Barry White
Lynn and Frank Wigington
Elizabeth and Chris Willett
Josie and Thomas Williams
Keneeshia N. Williams
Mrs. Joyce Williams
Catherine and William Wilson
Nancy Wolk
Anna Wolverton
Mrs. Joan D. Woodall
Ms. Dina Woodruff

CONSERVATION PARTNERS

American Public Gardens Association
Botanic Gardens Conservation International
Center for Plant Conservation
Chicago Botanic Garden
Cincinnati Zoo & Botanical Garden
Emory University
Florida State Parks
Friends of Jonathan Dickinson State Park
Georgia Department of Natural Resources
Georgia Institute of Technology
Georgia Plant Conservation Alliance
Georgia State University
Institute for Library and Museum Services
Jacksonville Zoological Society
The Morton Arboretum
National Fish and Wildlife Foundation
U.S. Fish and Wildlife
USDA Forest Service

MATCHING GIFTS

The Garden received matching contributions from the following companies:

ADP
Bank of America
The Coca-Cola Company
Gartner
Goldman, Sachs & Co
IBM
Jackson Healthcare
Macy's
McKinsey & Co.
Microsoft
Norfolk Southern Foundation
Prudential
Robert Half
SalesForce.org
State Street Foundation
SunTrust Banks
The Home Depot Foundation
Tull Charitable Foundation
University Financing Foundation
VOYA (ING)
XL Catlin

PERENNIAL SOCIETY

The Atlanta Botanical Garden would like to express heartfelt gratitude to all members of the Perennial Society who have thoughtfully included the Garden in their estate planning. As a result of the legacy commitments of these philanthropic individuals and families, the Garden will continue to flourish for generations to come.

TRIBUTE GIFTS

The following friends of the Garden were honored or remembered in 2019:

Carol Bassuener	Christopher Jones	Anne Pollack
Barbara Spencer Bastin	Andrea and Mark Kauffman	Nancy Prescott
Ann Chiller	Karen Korsun	Dorothy Ray
Sally Ann Clark	Barbara and Ken Kraft	Lee Robinson
Mary Wayne Dixon	Bianka Kucelin	Olive and Roby Robinson
Nell Everest	Jane Lamkin	Barbara Rothschild
Deborah Fast	Marjorie Leinbaugh	Arlene Anne Sandstrom
John Ferguson	Peggy Martin	Vincent Scarcella
Barbara Frederickson	Jane Strickland May	Jeff Schultz
Maureen Fuller	Mary Pat Matheson	Lila Scott
Gail and Peter Furniss	Kenneth McKenzie	Dean DuBose Smith
Nancy Gabianelli	Scott McMahan	Lessie Smithgall
Anne Goldthwaite	Myra Meadows	Barbara Tolbert
James Greene	Anna and Hays Mershon	Carol Tomé
Dolly Greenfield	Leslie Myers	Laura Wallace
Philip Gwynn	Susa and Andy Nahmias	Dwight Welshans
Megan Haley	Jacci Nightingale	John Wilcox
William Head	Faye Peters	Alex Woollcott
Gay Kahn Joel	Carol Plummer	

BENCH DONATIONS

Gifts of \$10,000 to \$25,000 were made to name Garden benches honoring the following individuals:

In Celebration of Judy and Don Bender

In Memory of Neil Murray

given by his family and friends

In Memory of Jacci Nightingale

given by her family

In Memory of Kristine Pettoni

given by her family and friends

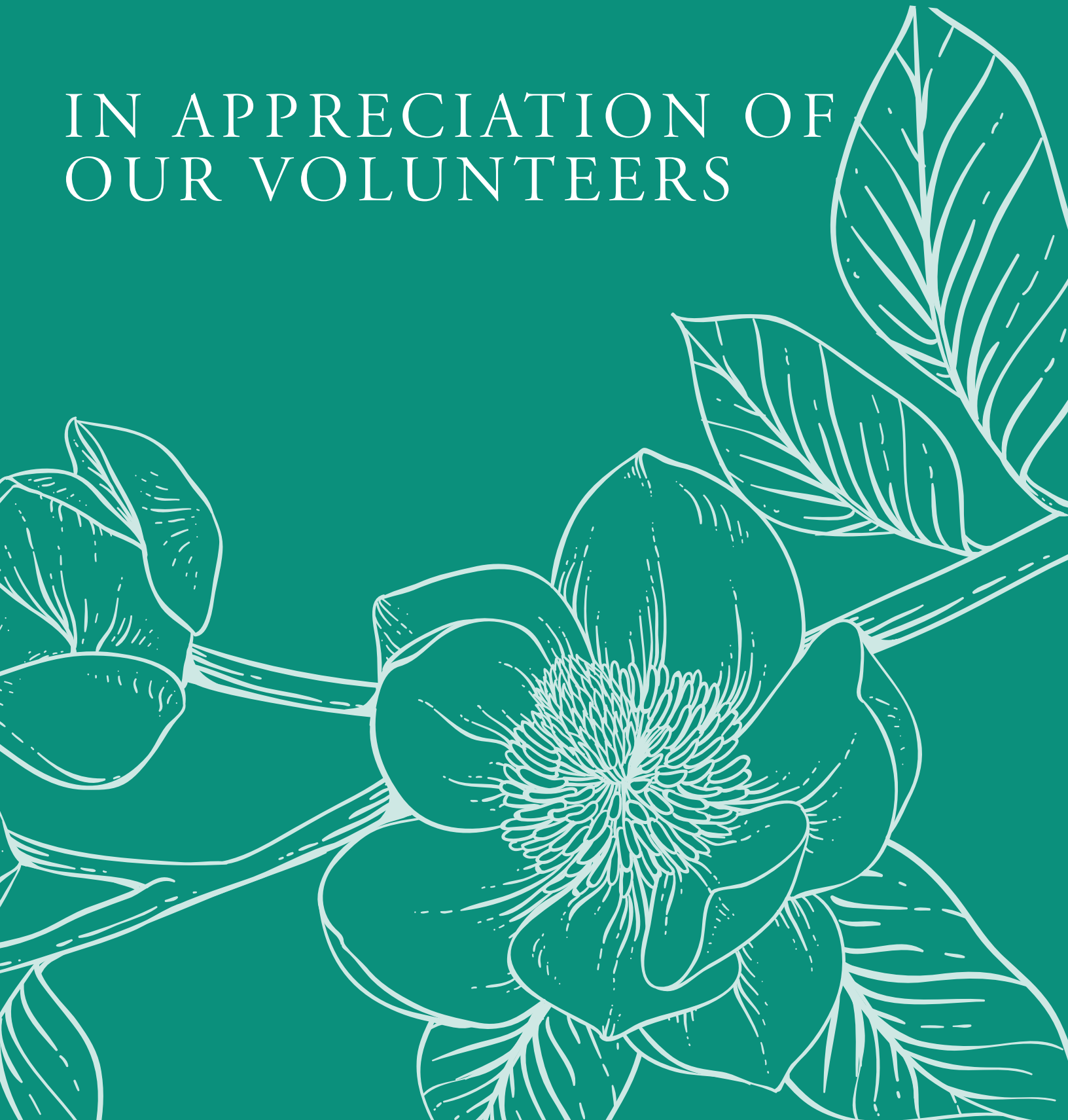
In Memory of Doris Smart

given by her family

*Every attempt has been made to ensure the accuracy of this document.
If there are omissions or errors, please accept our sincere apologies
and contact us at 404-585-2015 so that we may correct our records.*



IN APPRECIATION OF
OUR VOLUNTEERS



Volunteers Make the Garden Grow

The Atlanta Botanical Garden is truly indebted to the 460 individuals who donated their time and talents to the Garden in 2019. Our volunteers greet Garden guests, weed flower beds, serve as docents and Children's Garden guides, assist in the Outdoor Kitchen, respond to Plant Hotline inquiries, and so much more. The Garden's success can be attributed in large part to the tireless dedication of our volunteers, who collectively clocked more than 40,000 hours of service from January through December.

Centennial Club

A total of 188 individuals each contributed more than 100 volunteer hours in 2019.

Roots of the Garden

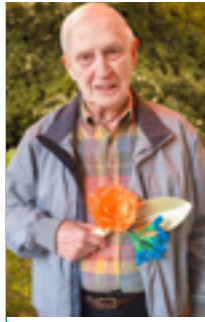
The following outstanding volunteers provided more than 300 hours of service this year:

Janet Cantrelle	606 hours
Charlotte Miller	573 hours
Clark Weisner	381 hours
Chris File	324 hours
Roy Pinkston	300 hours

2019 Volunteers of the Month

The following volunteers were nominated by their staff supervisors for showing exceptional devotion and enthusiasm in their roles:

Cyndy Franklin	Roberta Matthews	Sally Crowe
Joe Alexander	Rebecca Rahm	Harry Larsen
Lynn Malone	Susan Schlather	Sally Finkelstein
Lynda Pollock	Elise Halpern	Bettie Cheek



2019 Volunteer of the Year: Bob Nelson
After taking the University of Georgia Master Gardener course in Day Hall in 1997, Bob began volunteering with the outdoor collections alongside the horticultural staff. He has enjoyed fielding calls and emails for the Plant Hotline, and he has been a dedicated Thursday morning volunteer in the Edible Garden since it opened in 2010.



Lifetime Achievement Award: Nancy Waterfill

This award is reserved for remarkable volunteer contributions over a sustained period of time, and it has only been awarded a few times in the Garden's 43-year history. We are honored to present Nancy Waterfill with the Lifetime Achievement Award for her three decades of service to the Atlanta Botanical Garden.

Nancy started volunteering in the Garden Gift Shop in 1989, and she has been an inspirational, dedicated volunteer for more than 30 years, logging more than 100 hours of service nearly every year since the Centennial Club was established in 1991.

Garden Associates

In 2019, approximately 70 Garden Associates contributed their leadership, creative energy, and financial support to further the mission of the Atlanta Botanical Garden. This dynamic service organization assisted in planning and executing the Gardens for Connoisseurs Tour and other Garden activities throughout the year.

- Mary Wayne Dixon, *Advisory Chair*
- Beth Rummel, *President*
- Susan Brooks, *Membership*
- Jessica Dark, *Recording Secretary*
- Sandy Kellam, *Education*
- Forrest Leef, *Treasurer*
- Liza O'Hare, *Corresponding Secretary*
- Debbie Swann, *Fundraising*







ATLANTA BOTANICAL GARDEN

1345 Piedmont Avenue NE
Atlanta, Georgia 30309
404-876-5859
atlantabg.org

1911 Sweetbay Drive
Gainesville, Georgia 30501
404-888-4760
gainesvillegarden.org

